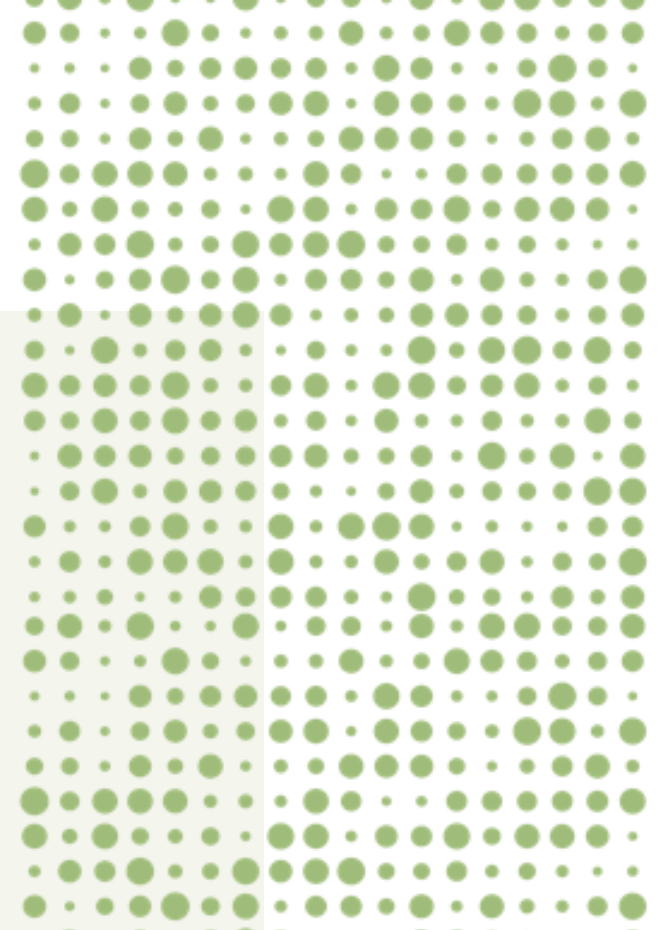


Social and Environmental Challenges to Superfund Redevelopment

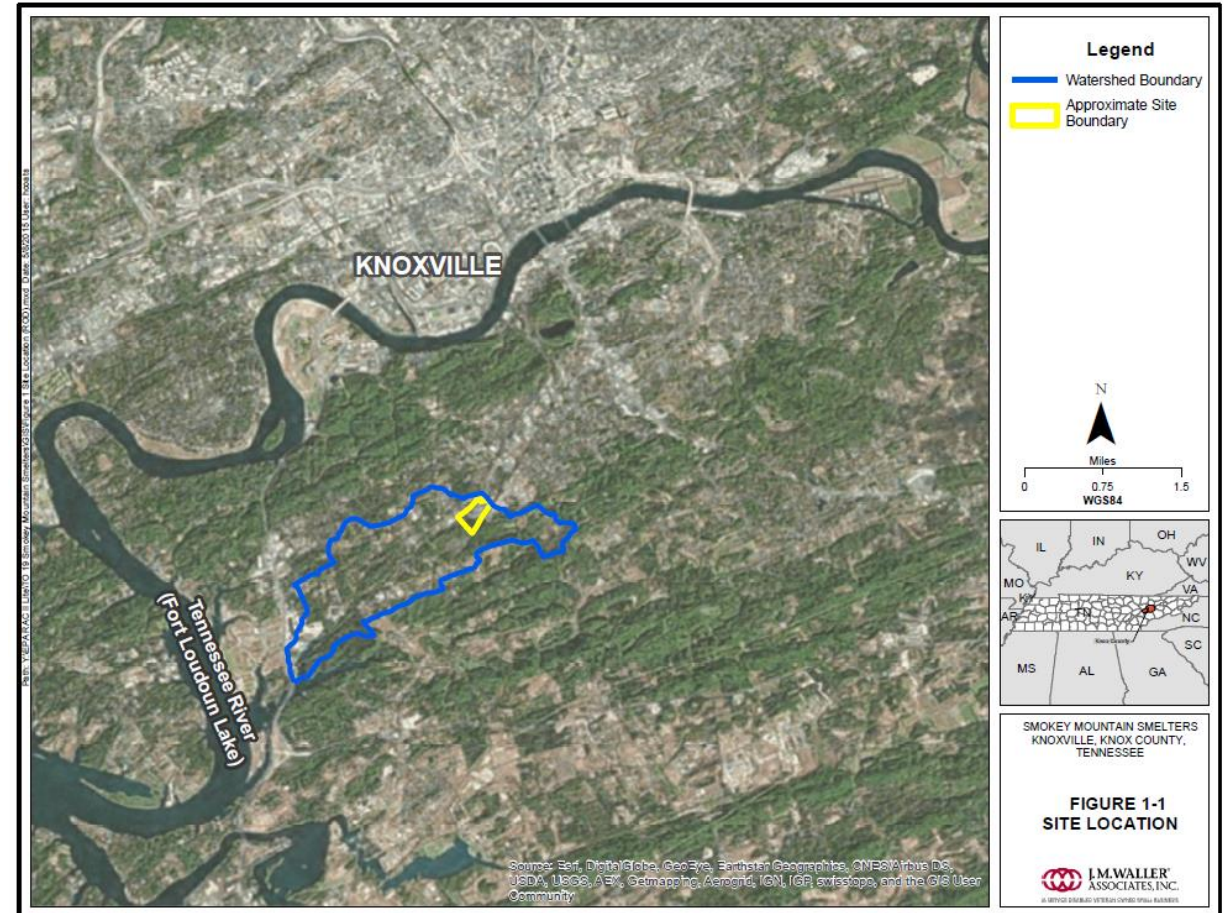
Andrew Gunnoe, PhD
Assistant Professor of Sociology
Maryville College



Smokey Mountain Smelters (SMS) Superfund Site Details

Site Details:

- Located in South Knoxville, TN
- Approximately 13 acres
- Surrounded by mixed industrial, commercial and residential area
- Two active railroads run along east and west borders
- Public housing complex adjacent to site

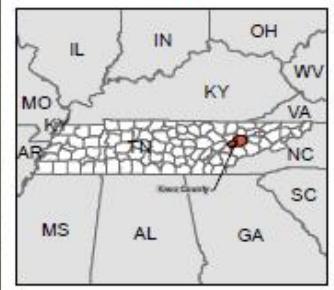
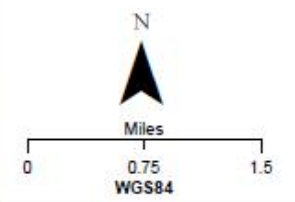




Aerial View of Knoxville, Tennessee, showing the Tennessee River (Fort Loudoun Lake) and the approximate site boundary. Source: Esri, DigitalGlobe, GeoEye, Earthstar Geographics, CNES/Airbus DS, USDA, USGS, AeroX, Getmapping, Aerogrid, IGN, IGR, swisstopo, and the GIS User Community

Legend

- Watershed Boundary
- Approximate Site Boundary

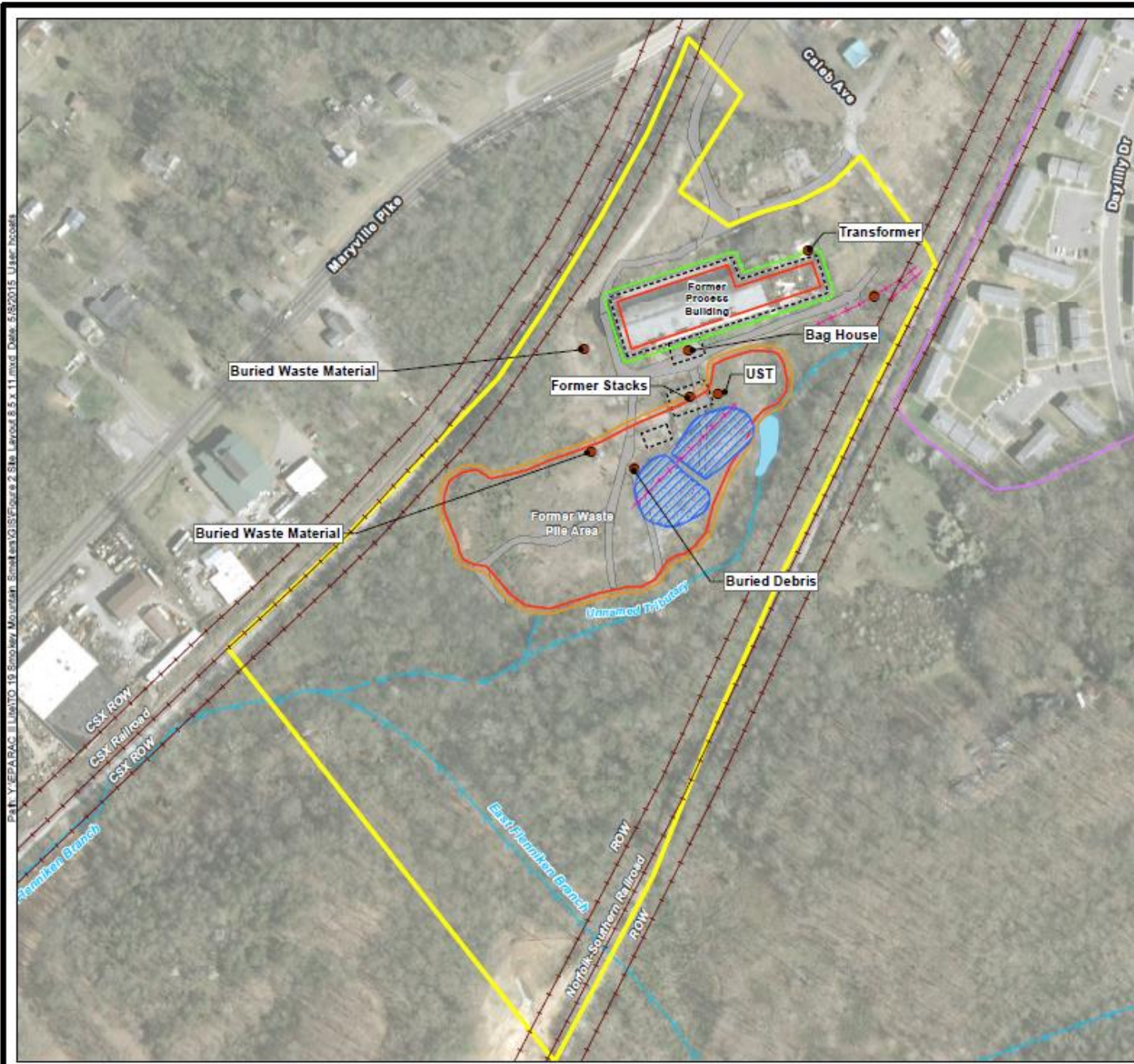


SMOKEY MOUNTAIN SMELTERS
KNOXVILLE, KNOX COUNTY,
TENNESSEE

**FIGURE 1-1
SITE LOCATION**

J.M. WALLER
ASSOCIATES, INC.

A SERVICE DISABLED VETERAN OWNED SMALL BUSINESS



P:\11\EPARAC\11\UNIT019_Smokey Mountain Smelters\GIS\Figures 2_Site Layouts\8.5 x 11.mxd Date: 5/8/2015 User: jwall

Legend

- SMS Site Features Points
- Railroad Tracks
- Abandoned Railroad Spur
- Montgomery Village Apts.
- Historic Surface Water Areas
- SMS CAP Area (Footprint of former process building)
- SMS CAP Area 2 (Footprint of the former waste area)
- Former Structure
- Waste Pile
- SMS Approx Site Boundary
- Temporary Gravel Road
- Former Settling Ponds
- Pond
- ← Surface Water Pathway

N

0 75 150 300
Feet
WGS84



SMOKEY MOUNTAIN SMELTERS
 KNOXVILLE, KNOX COUNTY,
 TENNESSEE

APPENDIX C
 SITE LAYOUT

J.M. WALLER
ASSOCIATES, INC.

© SERVICE CONTRACTS/TERMS/CONDITIONS SHALL BE REQUIRED

Smokey Mountain Smelters Superfund Background

- 1922-1948 Knoxville Fertilizer Company
- 1979-1990s - Smokey Mountain Smelters operates a secondary aluminum smelter
- 2010 - EPA places SMS on the National Priorities List



Enlisting Social Science Methods to Assess Community's Perspective:

- Involvement begins in early 2017
- Student research assistant
- Data Gathering:
 - Two Community Forums (Fall 2017)
 - Web Survey
 - Interviews
- Community Feedback: Wide range of input, yet common theme was a need for development that would directly benefit the social and economic issues endemic to the community



Outcomes

- Data gathering concluded in fall 2017
- Ongoing work by EPA and other partners
- A regional small rail line?



Lessons Learned

- Difficulty of working in, and redeveloping, superfund sites in marginalized communities
 - Limited community input
 - Redevelopment Possibilities





Thank you!